

Tech datasheet

Motion Detector Kit

Reference:
ACCMOTIONDETKIT



The kit allows for sending SMS alerts upon detecting motion in monitored rooms. The heart of the kit is a Bosch PIR motion sensor. When motion is detected in the protected zone, the sensor changes the state of its relay output.

The SMSEagle gateway reacts to this state change by triggering a defined action – e.g., sending an SMS or voice message to a specified person or group.

Kit includes

Bosch Motion Detector: 12x12 m detection range, PIR technology, FSP signal processing, NC alarm relay output, tamper protection, EN50130-5 Class II compliant.
Power Adapter (SYS1121 Series)

AC Power Adapter: high-efficiency switching power supply, providing stable and safe power for the detector. Input voltage range: 110-230V AC.

Connection Cable: 5 m, 4-core (power + signal), ferrule crimped, with DC socket and protected transitions.

Mounting Hardware: Adjustable wall mount bracket for precise sensor positioning.

Power adapter: Globally certified power supply (input 110-230VAC) for powering the motion detector.

Installation

1. Mounting: Mount the detector on the wall using the included wall mount bracket.

2. Wiring the detector: Open the detector by sliding down the front cover. Connect the dedicated cable to the blue terminal inside the detector:

Wire	Motion Detector Terminal
Black	-
Red	+
Orange	NC
Brown	NC

3. Connecting to SMSEagle: Plug the other end of the cable into the SMSEagle Digital Input and GND terminals:

Wire	SMSEagle Terminal
Orange	DI 1
Brown	GND

4. Power: Plug the power adapter into the DC socket on the cable, then plug the adapter into a 110–230 V mains socket.

A full installation guide is available at the end of this datasheet.

Technical Parameters of the Kit Components

1. Bosch Motion Detector

A professional passive infrared (PIR) detector with advanced First Step Processing (FSP) for false alarm elimination.

Dynamic Temperature Compensation

The detector intelligently adjusts its sensitivity so that it can identify human intruders at virtually any temperature.

Wall-to-Wall Coverage

An improved lookdown zone and coverage range of 12 m x 12 m (40 ft x 40 ft) provide wall-to-wall coverage.

Detection Parameters:

Technology: Passive Infrared (PIR)

Range: 12 m x 12 m

Mounting Height: Recommended 2.2 m to 2.75 m (no adjustment required)

Signal Processing: FSP (First Step Processing) fast response

Compensation: Dynamic temperature compensation

Electrical:

Operating Voltage: 9 VDC to 15 VDC, 110–230V using the power adapter included in the kit

Current Consumption (Standby / Alarm): 10 mA (at 12 VDC)

Outputs:

Relay (Alarm): Solid-state, supervised, Form A contacts (Normally Closed / NC).

Relay Rating: ≤ 100 mA, 25 VDC, 2.5 W

Tamper Protection: Normally Closed (NC) contacts (with cover on).

Tamper Contact Rating: ≤ 100 mA, 25 VDC, 2.5 W

Physical & Environmental:

Dimensions: 105 x 61 x 44 mm

Housing Material: High-impact ABS plastic

Color: White

Operating Temperature: -30°C to 55°C

Relative Humidity: 0 to 95% (non-condensing)

Compliance: EN50130-5, Class II

RF Immunity: High (tested up to 30 V/m from 150 kHz - 2 GHz)

Region	Certification	
Europe	CE	2004/108/EC: EMC Directive and 2006/95/EC: Low-Voltage Directive
	CERTA-LARM	EN50131-2-2 [-W12] EN50131-2-2 [-WP12]
Belgium	INCERT	B-509-0051/b [ISC-BPR2-W12, WP12]
Norway	FG	GODKJENNELSESBEVIS [-W12, -WP12]
USA	UL	cULs - ANSR: Intrusion-detection Units (UL 639), ANSR7: Intrusion-detection Units Certified for Canada (ULC-S306) [W12 and -WP12]
France	AFNOR	2620200001A0 [-W12] 2620200001B0 [-WP12]
Sweden	INTYG	11-268 [-WP12] 11-269 [-W12]
Netherlands	NCP	2011062 [ISC-BPR2-w12, -WP12, ISCBPQ2-W12, ISC-BDL2-W12G, ISC-BDL2WP12G, ISC-BDL2-WP6G]
Bulgaria	GD FSP	GODKJENNELSESBEVIS [-W12, -WP12]

These detectors are also designed to comply with the following:

Europe Complies with EN50131-2-2 Grade 2
Complies with EN50130-5 Class II
Complies with EN60529, EN50102 (IP30, IK04)
Complies with Directive 2002/95/EC - Restriction of the use of certain Hazardous Substances (RoHS)

2. Connection Cable

Length: 5 meters

Power: DC 5,5/2.1mm socket (female, center positive)

Signal: Crimped ferrules (for the terminal block)

3. Mounting Kit

Function: Wall mounting

Adjustment: Allows for precise adjustment of the detector's tilt angle.

4. Power adapter

Input: 100-240VAC

Output: 12VDC

Max power: 6W

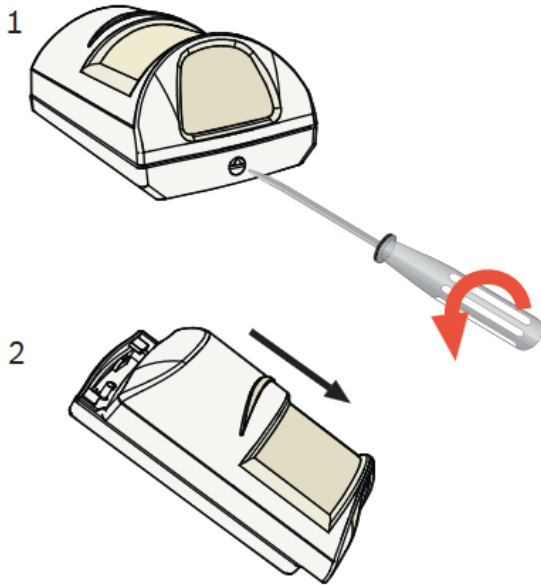
Operating temperature: 0-40°C

DC connector: 2.1x5.5x11

Safety approvals: cUL | GS | CE | CB | RCM | SAA | PSE | LVD | UKCA | BS | BSMI | CCC

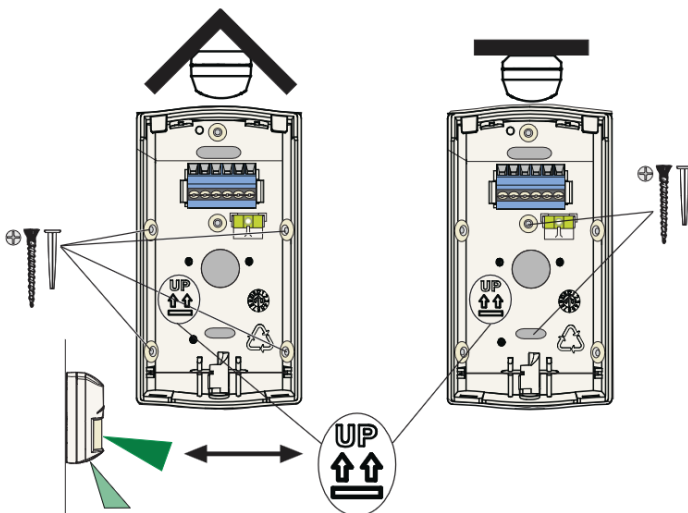
Full Installation Guide

1. Open the detector

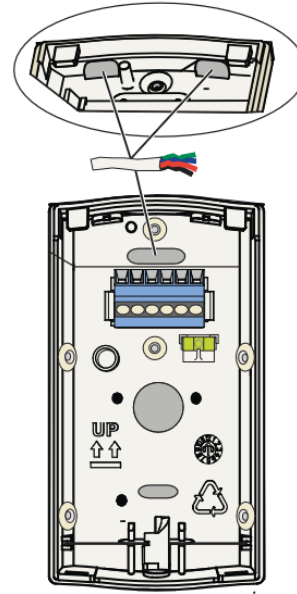


2. Mounting holes

Depending on where the detector is to be fitted (on a flat wall or in a corner), drill holes in the detector housing. The recommended mounting height is 2.2m to 2.75m (7.5 ft to 9 ft) with no adjustments required. The kit includes the optional B328 Gimbal-mount Bracket for easier mounting.



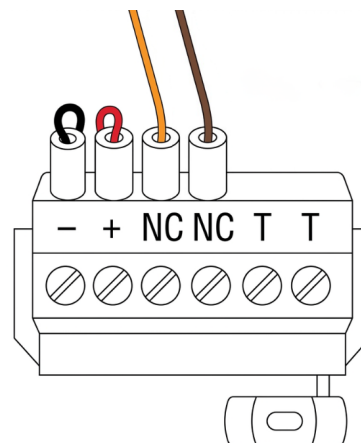
3. Insert the dedicated cable into the detector



4. Connect the dedicated cable

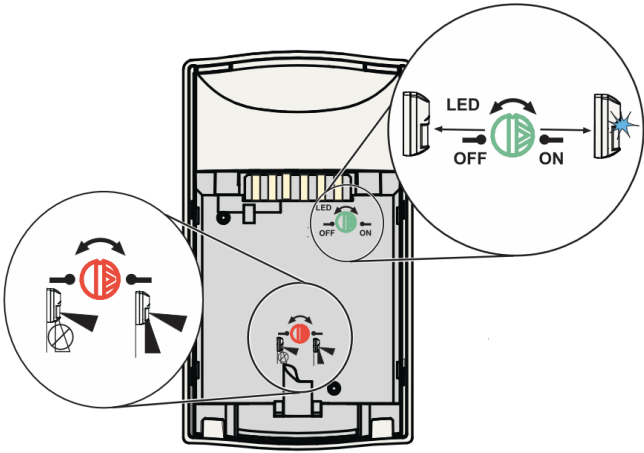
Connect the dedicated cable to the blue terminal inside the detector:

Wire	Motion Detector Terminal
Black	-
Red	+
Orange	NC
Brown	NC

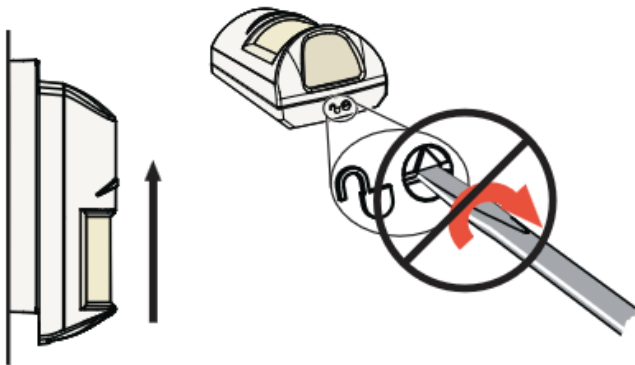


5. Detection range & LED

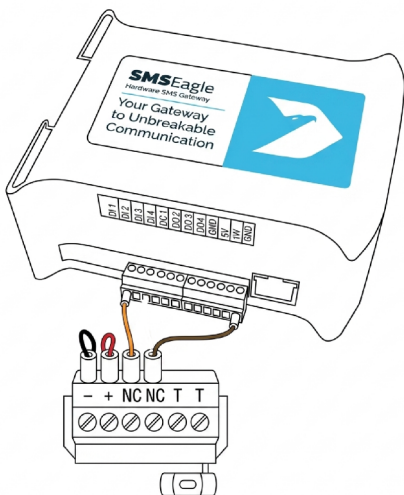
Set the detection range to short or long, and configure the LED behaviour.



6. Close the detector



7. Connect the dedicated cable to SMSEagle



8. Power

Plug the DC output of the power adapter into the DC socket on the dedicated cable, then plug the adapter into a 110–230 V mains socket. The detector requires approximately 2 minutes to power up.

9. Coverage Patterns

