



RSA SMS HTTP Plug-In Implementation Guide

Last Modified: November 9, 2017

Partner Information

| Product Information | |
|---------------------|---|
| Partner Name | Proximus |
| Web Site | www.smseagle.eu |
| Product Name | SMSEagle |
| Version & Platform | 1.2.1 Hardware Gateway |
| Product Description | SMSEagle is a hardware SMS gateway for sending and receiving SMS messages directly to/from GSM network. The device allows you to send SMS messages without the need of Internet connection. Just put a SIM card inside the device, plug it in your local network and use built-in API to send/receive SMS messages. |

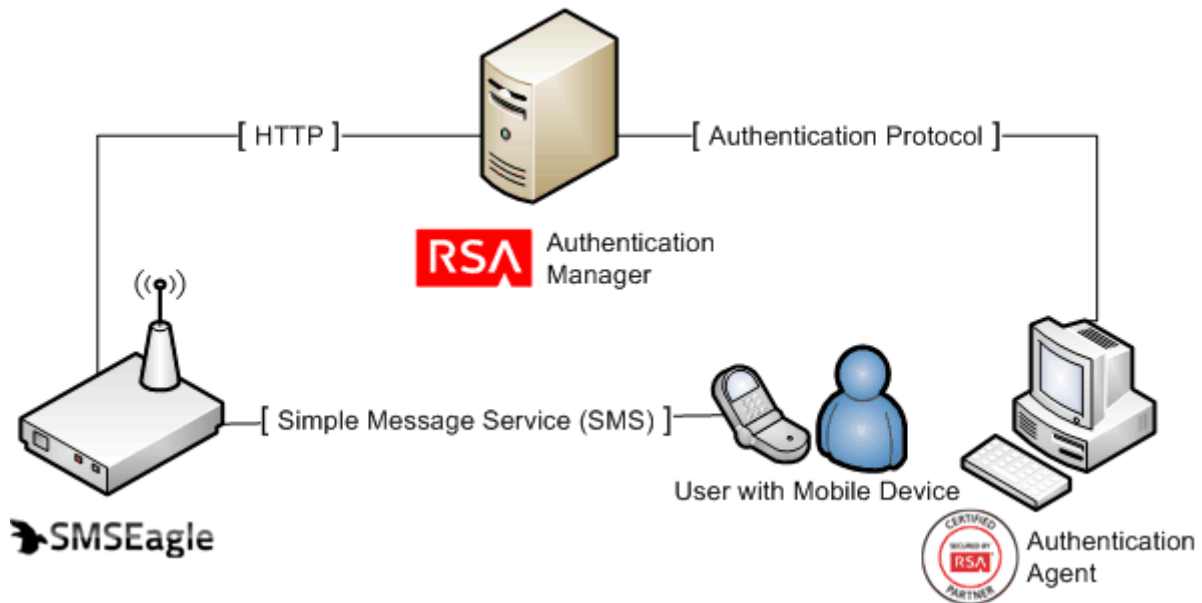


Solution Summary

RSA Authentication Manager can be configured to utilize SMSEagle for delivery of on-demand tokencodes to be used in on-demand authentications.

When a user authenticates to an agent using his/her username and on-demand PIN, the RSA Authentication Manager sends the on-demand tokencode and mobile number to SMSEagle using the HTTP(S) protocol. SMSEagle then delivers the on-demand tokencode to the user's mobile device via Short Message Service (SMS). The authentication process is completed when the user enters the ondemand tokencode into the agent's prompt for next tokencode.

| RSA HTTP Plug-In Supported Functions | |
|--|-----|
| Proximus SMSEagle | |
| Integrates with HTTP Plug-In via HTTP | Yes |
| Integrates with HTTP Plug-In via HTTPS | Yes |



SMS HTTP(S) Plug-In Configuration

RSA Authentication Manager can be configured to integrate a supported Short Message Service (SMS) provider using HTTP, HTTPS, or XML-over-HTTP to deliver on-demand tokencodes to a user's mobile phone.

! > Important: HTTP connections are not secure. Sensitive information, such as a tokencode, may be exposed. For secure connections, configure HTTPS.

Before configuring the HTTP Plug-In, you must locate the configuration parameters and base URL. This information is identified during the configuration of SMSEagle. You must include the following elements within your provider's parameters to retrieve data from the corresponding fields.

| Required HTTP Plug-In Parameters | |
|----------------------------------|---|
| Elements | Description |
| \$cfg.user | Account User Name |
| \$cfg.password | Account Password |
| \$msg.address | User Attribute to Provide SMS Destination |
| \$msg.message | On-Demand Tokencode Message |

SMS HTTP Plug-In is configured in the RSA Authentication Manager's Security Console. The configuration page has three sections:

- Tokencode Delivery by SMS
- SMS Provider Configuration
- SMS HTTP Proxy Configuration (optional)

Tokencode Delivery by SMS

- Mark the Delivery by SMS checkbox to enable the delivery of On-Demand Tokencodes using SMS service.
- Select the User Attribute to Provide SMS Destination from the drop-down menu.
- (Optional) Select the Default country code from the drop-down menu.
- Select HTTP or HTTPS from the SMS Plug-In drop-down menu.

| Tokencode Delivery by SMS | |
|--|---|
| ② Delivery by SMS: | <input checked="" type="checkbox"/> Enable the delivery of on-demand tokencodes using SMS service |
| ② User Attribute to Provide SMS Destination: * | -- Choose One -- |
| ② Default country code: * | -- Lookup Country Code -- |
| ② SMS Plug-In: * | HTTP |

SMS Provider Configuration

- Copy the following line into Base URL field and replace [IP or hostname] and [port] with the IP or hostname and port configured on your device. USE either http or https at URL beginning

`http(s)://[ip or hostname]:[port]/index.php/http_api/send_sms`

- Select GET from the HTTP Method drop-down menu.
- Copy the following string into the Parameters field.
`Login=$cfg.user&pass=$cfg.password&to=00$msg.address&message=$msg.message`

- Enter Account User Name for the SMSEagle device.
- Enter Account Password for the SMSEagle devicer.
- Copy the following line into the Success Response Code field.

OK

- Copy the following line into the Response Format field.

`(. .);*`

The screenshot shows the 'SMS Provider Configuration' form with the following fields and values:

- Base URL:** * [Empty field]
- Certificate:** [Import Certificate button] (If you enter an HTTPS Base URL, you must import a certificate.)
- HTTP Method:** GET
- Parameters:** * [Empty text area]
- Account User Name:** * [Empty field]
- Account Password:** * [Empty field]
- Connection Timeout:** 5000 milliseconds
- Success Response Code:** * [Empty field]
- Response Format:** * [Empty field]

SMS HTTP(S) Proxy Configuration (optional)

Enter the configuration settings for your HTTP Proxy server if you are using one.

The screenshot shows the 'SMS HTTP(S) Proxy Configuration' form with the following fields:

- Proxy Hostname:** [Empty field]
- Proxy Port:** [Empty field]
- Proxy User:** [Empty field]
- Proxy Password:** [Empty field]

Click Update to save the SMS Configuration.

Partner Product Configuration

Before You Begin

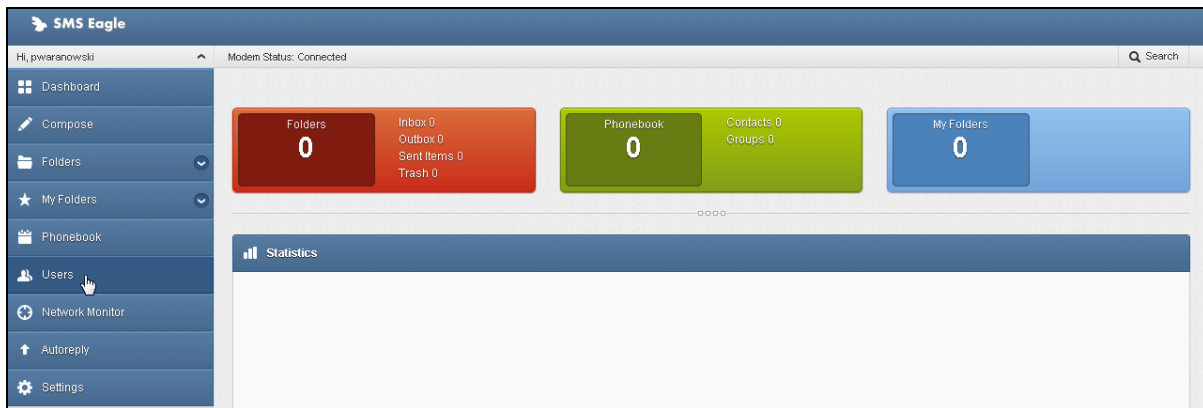
This section provides instructions for configuring the SMSEagle with RSA HTTP(S) Plug-In to deliver on-demand tokencodes. This document is not intended to suggest optimum installations or configurations.

It is assumed that the reader has both working knowledge of all products involved, and the ability to perform the tasks outlined in this section. Administrators should have access to the product documentation for all products in order to install the required components.

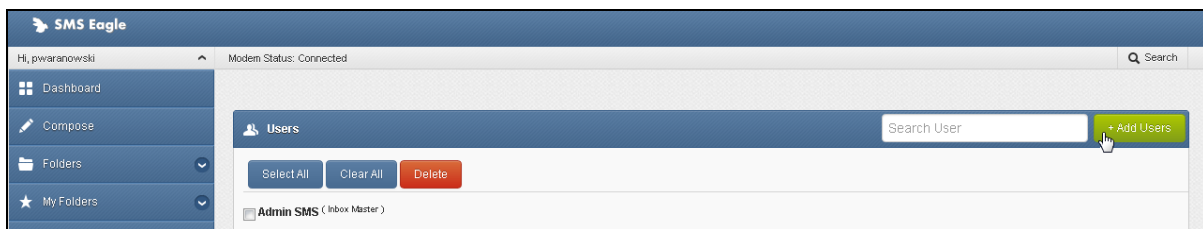
Configuring SMSEagle for RSA HTTP(S) Plug-In

To integrate the SMSEagle with the RSA HTTP Plug-In, you must only create a user account. The user account is automatically enabled for use with the HTTP(S) API.

1. Logon to the SMSEagle Administrative Web Console, and click **Users**.



2. Click **Add Users**.



3. Complete and submit the add user form.

Add/Edit Users ✕

All form fields are required

Name

Phone access number (for password reminder)

Username

Password

Confirm Password

Level
 ▼

Certification Checklist for RSA HTTP(S) Plug-In

Date Tested: December 20, 2013

| Certification Environment | | |
|----------------------------|---------------------|------------------------|
| Product Name | Version Information | Operating System |
| RSA Authentication Manager | 8.0 | Virtual Appliance |
| RSA Authentication Agent | 7.2 | Windows Server 2008 R2 |
| Proximus SMSEagle | 1.2.1 | N/A |

| Mandatory Functionality | |
|---|---|
| SMS Message Delivered | ✓ |
| On-Demand Authentication with SMS tokencode | ✓ |
| Success Code Received by HTTP Plug-In | ✓ |

PEW

✓ = Pass ✗ = Fail N/A = Not Applicable to Integration